



MERCEDES SPRINTER 2007+

INSTALLATION GUIDE - AT/Z



60 min.



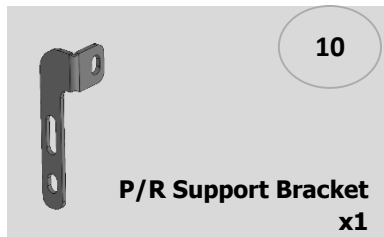
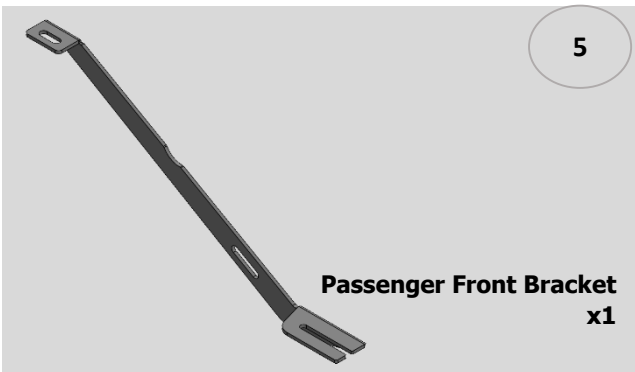
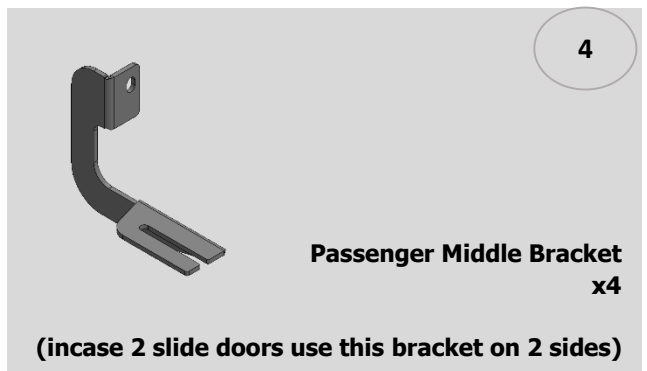
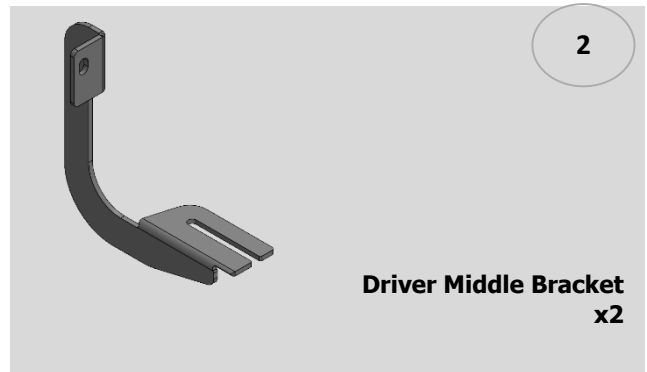
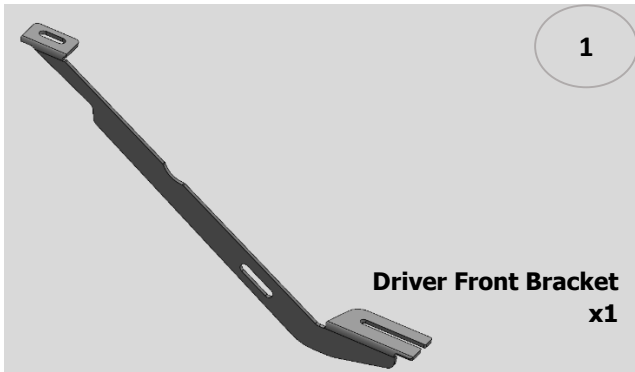
NO.	PART NUMBER	QTY.
1	J13025850F0 Driver Front Bracket	1
2	J13025850CLO Driver Middle Bracket	2
3	J13025850B0 Driver Rear Bracket	1
4	J13025850CR0 Passenger Middle Bracket	4
5	J13025850F0 Passenger Front Bracket	1
6	J13025850B0 Passenger Rear Bracket	1
7	J13025150F1 Driver Front Support Bracket	1
8	J13025150B1 Driver Rear Support Bracket	1
9	J13025150F1 Passenger Front Support Bracket	1
10	J13025150B1 Passenger Rear Support Bracket	1
11	HTCOR3 M10 f=8mm	4
12	M10x40 Flange Bolt	4
13	M10 Washer	4
14	HTC 243 - M10x25(4x12x50)	8
15	HTC 269 - CLIPS (M10)	8
16	M10x25 Flange Bolt	4
17	M10 Flange Nut	14

2 Non slide door bracket (2x)

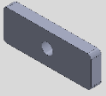
4 Slide door bracket (4x)

AD, on right side: incase double slide door change bracket 2 into 4

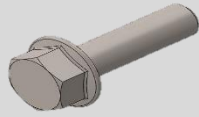
Box Contents



Box Contents



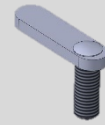
HTC OR3
x4



M10x40 Flange Bolt
x4



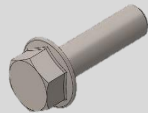
M10 Washer
x4



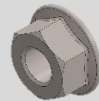
HTC 243 – M10x25
x8



HTC 269 – M10 Clips
x8



M10x25 Flange Bolt
x4



M10 Flange Nut
x14

Brackets Assembly

